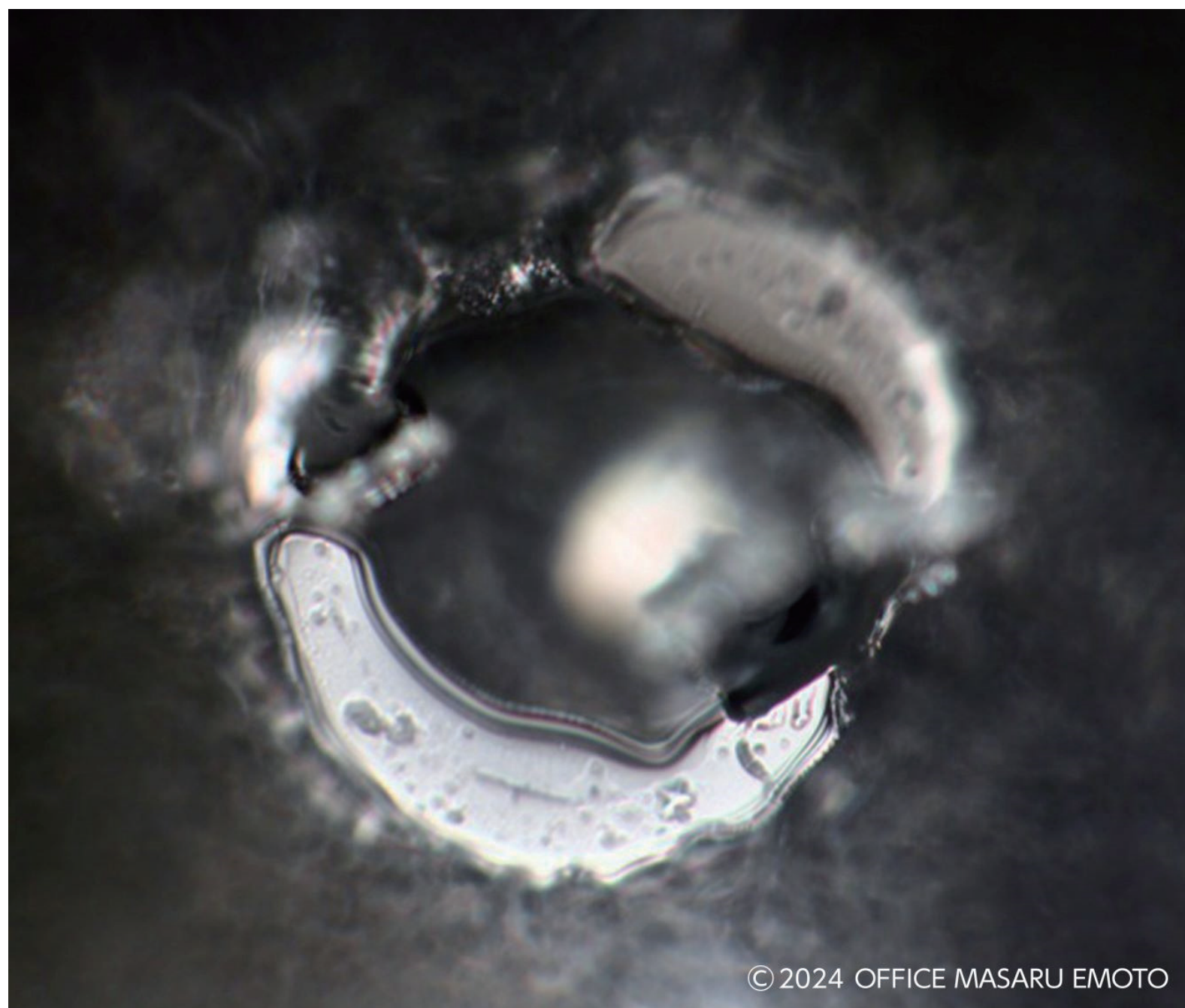


Water crystal of π -filtered water

The more natural the water is, the more beautiful hexagonal figure the water crystal will be. Tap water treated by π -water treatment system was taken its crystal photograph by Office Masaru Emoto LLC, an expert company in research of water crystals.

Condition of freezing : -25°C of the lowest temperature for 24hours of freezing
Temperatur of observation : $5\pm 2^{\circ}\text{C}$ Device : Olympus optical metaloscope (x200)
Number of samples : 50 pcs of Petri dish Photos taken in October 2024



Tap water (Nishio-city, Aichi prefecture, Japan)



π -filtered water

What water crystals tell to you

~ Report on test results by OFFICE MASARU EMOTO ~

We think that the shapes of crystals by our crystal photograph technology reflect not only materials dissolved in the water but also information and energy impregnated within before frozen.

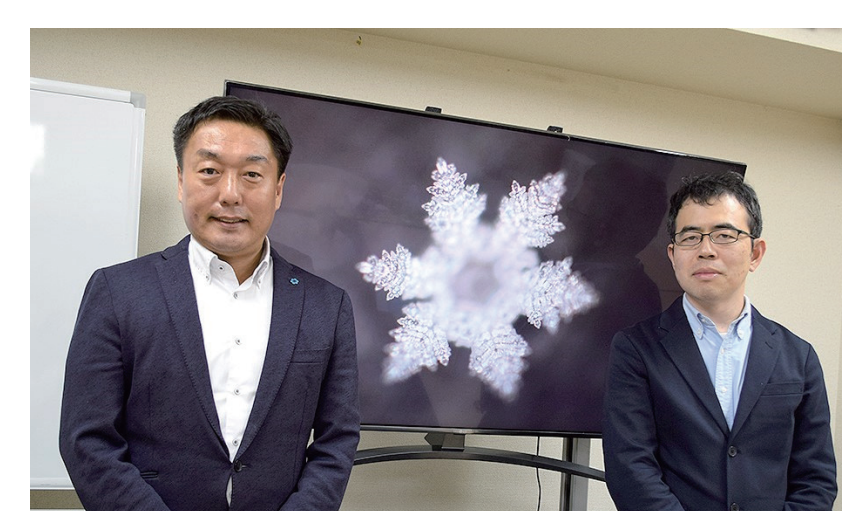
We have been observing tap waters in various places and found few beautiful crystal structures with those in big cities. On the other hand, well-balanced hexagonal crystals have been observed with those in local area surrounded with natural environment. We also say, from our experiments, spring waters selected as the best 100 waters form very beautiful crystals like jewels but waters in polluted rivers produce deformed shapes.

We, therefore assume that waters with natural harmonic information and energy will crystallize in beautifully balanced hexagonal

shapes and waters without harmony in nature and with destructive information such as tap waters with chlorine will not form in beautiful structures.

This time, we compared the shapes of crystals of tap water before and after filtering by π -water treatment system. As results, beautiful crystals were hardly observed with original tap water and treated water produced very beautiful well-balanced hexagonal crystals like snow crystals.

With the results, it can be said that π -water filter gives natural harmonic information and energy to water in addition to remove chlorine and other harmful things.



Left) Hiromasa Emoto
President
Representative director
Right) Takeshi Katsumata
Researcher
Crystallization team
Office Masaru Emoto, LLC
I.H.M. Co.,Ltd.

※ Please visit the following for details of crystal photography
<https://masaru-emoto.net>